

JOB NUMBER: J5010/2



BLACKLIGHT TOURS MERCEDES SPRINTER TOUR BUS

CONTENTS

INTRODUCTION	02
FRONT CABIN FEATURES	03
TELEVISION & SOUND	05
REAR SALOON FEATURES	07
ELECTRICS	09
PRODUCTION AREA	11
DRESSING TABLE & FEATURES	13



THANK YOU FOR CHOOSING STANFORD COACHWORKS TO CARRY OUT YOUR BESPOKE VEHICLE CONVERSION.

Please refer to your user guide for information on your new vehicle.



FRONT CABIN MAIN CONTROL PANEL

The main control panel is situated to the left of the steering wheel in the front cabin. When on, these buttons will illuminate red.

- 01 Rear saloon power on / off
- 02 Rear saloon media on / off (Apple TV etc.)
- 03 Override
- 04 Reverse buzzer
- 05 Runlock

03



RUNLOCK

The runlock button is also located on the main control panel. To use the runlock, start the ignition, press the runlock button, then remove the key. The vehicle will then continue to run until switched off or any of the pedals are touched.

HOW TO WORK THE TV & SOUND



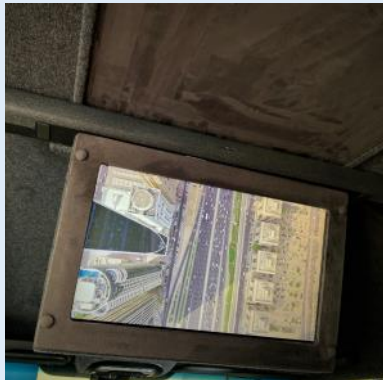
STEP ONE

On the main control panel, switch the on / off and media buttons on. When on, these buttons will illuminate red.



STEP TWO

The Apple TV & soundbar should automatically turn on, however if it does not, press the centre button on the Apple TV remote and the power button on the Denon remote.



STEP THREE

The Apple TV will then display on both screens. Please refer to the Apple TV guide in the vehicle book pack for further information.



PASSENGER SALOON CENTRE TABLE

- 01 Lighting controls panel
- 02 HDMI socket
- 03 Denon soundbar remote
- 04 Apple TV remote
- 05 Small cupholders
- 06 Large cupholders

PASSENGER SALOON FEATURES



LIGHTING CONTROLS

Left = white LED lights

Right = blue LED lights



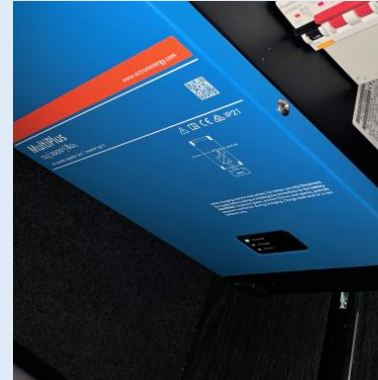
HDMI SOCKET

The HDMI socket is located between the white and blue LED lighting switches. A device can be plugged into this socket which will then automatically be mirrored onto the screen.



240V PLUG SOCKET & USB CHARGING POINTS

The 240 volt plug socket is located beneath the centre table. This socket also includes two USB charging points.



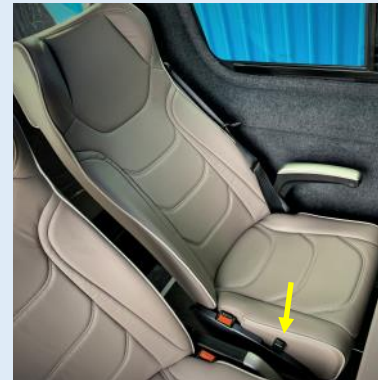
INVERTER

The inverter is located behind the row of forward facing seats in the passenger saloon. Ensure that the green light on the front is illuminated.



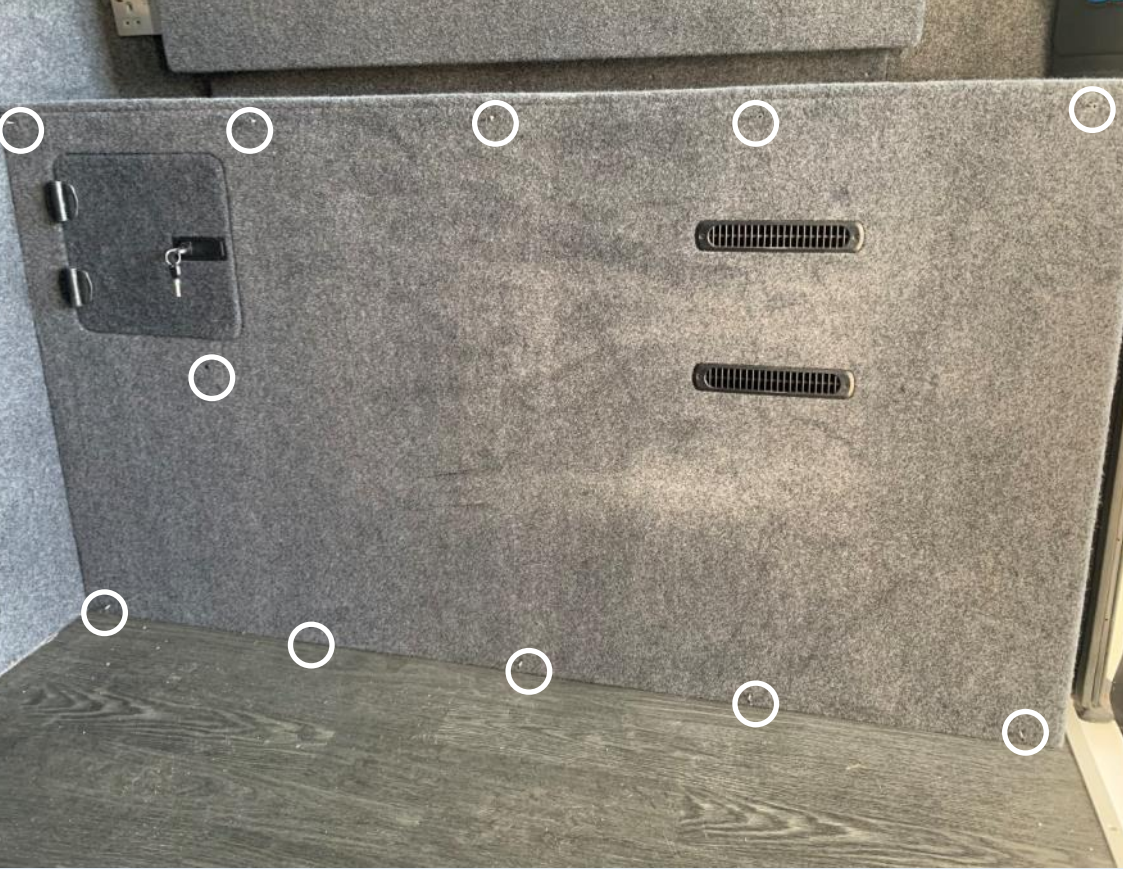
INVERTER TRIP SWITCH

This trip switch is located to the right of the inverter.



SEATS

Each seat features reclining functions. To recline, press the black button on the lower side of the seat (shown left).

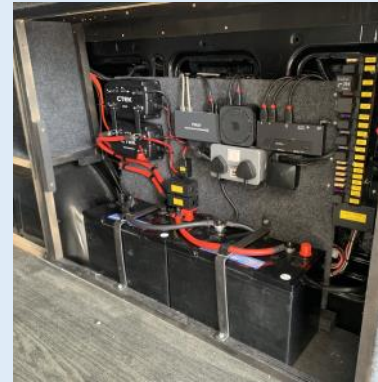


ACCESSING THE ELECTRICS

To access the electrics, the above panel in the production area must be removed.

This panel can be found beneath the LED illuminated mirror. Please see the location of each screw circled above.

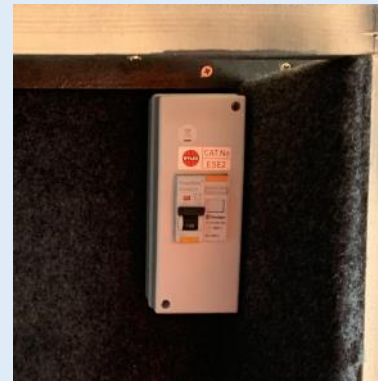
ELECTRICS



ALL ELECTRICS

All fuses, chargers and batteries can be found behind the panel in the rear production area.

Each item will be labelled with a yellow sticker.



EXTERNAL HOOK UP TRIP SWITCH

The trip switches can be found in the lockable cupboard (shown on the left). The switch is for external electrics.



EXTERNAL HOOK UP

The external hook-up point is located on the offside of the vehicle.



REAR SALOON PRODUCTION AREA

- 01 Lighting controls for production area
- 02 Fold-down dressing table
- 03 LED illuminated mirror
- 04 U-shaped clothing rail
- 05 Lockable storage cupboard
- 06 Electrics compartment



CLOTHING RAIL

The rear saloon production area features a U-shaped overhead clothing rail.



FOLD-OUT LED ILLUMINATED DRESSING TABLE

- 01 Mirror
- 02 LED lights
- 03 Chequer plated dressing table
- 04 240v plug socket with USB charging points
- 05 Clips to secure dressing table away



LIGHTING SWITCHES

These lighting switches are located on the rear door pillar to the right of the dressing table.

- 01 Switch for mirror lights
- 02 Switch for production area LED roof lights



MOBILITY HOUSE, STANHOPE INDUSTRIAL PARK,
WHARF ROAD, STANFORD LE HOPE, ESSEX, SS17 0EH

01375 676088

SALES@STANFORDCOACHWORKS.CO.UK

JOB NUMBER: J5010/2